

INFORMATION FOR  
**overseas**  
**patients**

REQUIRING HEALTH CARE  
AT PENINSULA HEALTH

PATIENT GUIDE



Peninsula  
Health

## If you are an overseas visitor you must tell Peninsula Health

As a visitor to Australia, you are not eligible for Medicare, the Australian Government's health care program.

### Will I have to pay for my health care?

The Australian Government has Reciprocal Health Care Agreements with the UK, New Zealand, Ireland, Sweden, the Netherlands, Finland, Belgium, Norway, Slovenia, Malta<sup>1</sup> and Italy<sup>1</sup>. These agreements entitle you to limited subsidised health services for medically necessary treatments whilst visiting Australia. Please note that conditions do apply for some countries.

If you are an overseas visitor from a country who Australia does **not** have a Reciprocal Health Care Agreement with, you will be treated as a **Medicare Ineligible Patient** and will be required to pay the hospital for all medical care and treatment. This includes the Emergency Department attendances, inpatient (admitted) care and accommodation, as well as outpatient services and clinics.\*\*

As an overseas visitor, it is your responsibility to ensure you have adequate health insurance cover or money to cover the cost of your health care. Subject to the terms and conditions of your policy, you may be able to claim these costs back from your health insurer. The hospital will lodge your claim on your behalf, and will advise if any balances remain outstanding.

Any outstanding balances need to be paid by the patient.



Peninsula  
Health

## OVERSEAS INELIGIBLE PATIENT FEE STRUCTURE

HOSPITAL SERVICE**	Fee for Overseas Ineligible Patients*
<b>1. EMERGENCY &amp; OUTPATIENTS</b>	
Emergency Attendance - non admitted	\$550
Outpatient Clinic medical, per consultation	\$250
Outpatient Clinic maternity, per consultation	\$250
Outpatient Clinic Allied Health, per consultation	\$150
Midwifery Homecare, per visit	\$100
<b>2. WOMENS HEALTH - INSURED</b>	
Bed Rate, per day/night includes management of birth	\$4,130
Additional nights, per night	\$4,130
<b>3. WOMENS HEALTH - UNINSURED</b>	
Maternity Care, per birth episode***	\$15,000
<b>4. CORONARY CARE</b>	
Bed Rate, per night	\$3,000
Bed Rate, per day	\$1,500
<b>5. INTENSIVE CARE UNIT</b>	
Bed Rate, per night	\$4,500
Bed Rate, per day	\$2,500
<b>6. MEDICAL / SURGERY</b>	
Medical – Same day	\$1,200
Medical – Overnight	\$1,500
Surgical – Same day	\$1,500
Surgical – Overnight	\$1,800
<b>7. OTHER</b>	
Sub-Acute Inpatient, per night	\$1,500
Sub-Acute Inpatient, per day	\$1,200
Mental Health Inpatient, per night	\$1,500
Mental Health Inpatient, per day	\$1,200
Special Care Nursery, per night	\$1,500
Special Care Nursery, per day	\$1,200
Hospital in the home, per night if seen by clinician	\$250

\* Fees are valid effective 1 March 2018 and are subject to change at any time without notice. Please request an up to date quote prior to your admission.

\*\*Fees above do not include additional costs for surgically implanted prostheses, diagnostic services (e.g pathology, radiology) or pharmaceuticals. You are responsible for these additional costs.

## **Maternity Care**

The payment for maternity care at Peninsula Health is required prior to confirmation of your booking and commencement of care.

Payment can be made as one upfront payment, or three equal instalments paid in full prior to delivery. The first instalment must be received prior to commencement of any maternity care.

It is your responsibility to ensure you have adequate money or health insurance cover for your own and your baby's health care needs.

We suggest you check your level of cover for pregnancy, and also if your policy covers the cost of hospital home visiting after discharge.

A Private Patient Services Officer will discuss your booking and documentation requirements and provide you with your payment options.

## **Hospital Outpatient Costs**

Maternity 'outpatient' clinic attendances are charged a standard fee per visit. This fee must be paid prior to the appointment if your insurance fund does not cover you. Please be aware some health funds will only partially cover your maternity outpatient appointments, and you will be required to cover any balance outstanding.

This charge does not include any diagnostic services, these will be billed separately.

## **Hospital Admission Costs**

Charges apply for hospital accommodation. If your baby requires specialised nursery care or theatre, additional charges will also apply.

## **Midwifery Homecare**

After being discharged, you will be offered a home visit by a midwife. These home visits are an important part of the care for you and your baby. This will be discussed with you before being discharged from hospital.

## **What do I need to provide?**

You will be asked to present your passport and visa, a copy of your health insurance policy and a valid credit card.

## **What happens if I don't pay?**

If you do not pay, Peninsula Health may instigate legal proceedings to recover any outstanding amounts.

Peninsula Health may also advise the relevant authorities if required.

If paying the full fee will cause you financial hardship, please ask to speak to the Private Patient Liaison Officer.

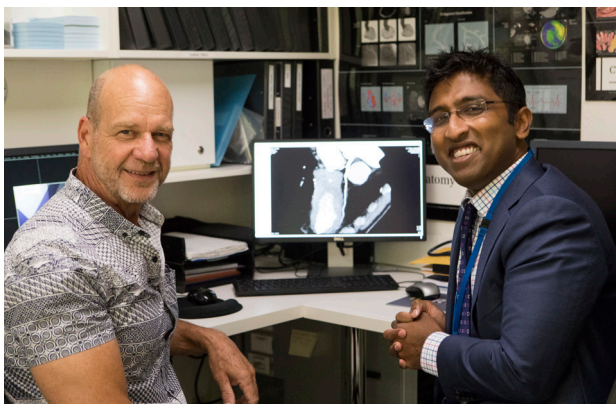
## **Need help or assistance?**

If you have any questions, or need assistance during your admission, Peninsula Health's Private Patient Services Officers are available to assist you.

Phone: [\(03\) 9784 8056](tel:0397848056)

Email: [patientliaison@phcn.vic.gov.au](mailto:patientliaison@phcn.vic.gov.au)

You can pay your fees at the Hospital Cashier Phone (03) 9784 7755





FOR MORE INFO

### References:

Medicare Australia: Healthcare for visitors to Australia

Disclaimer: The information contained in this brochure is intended to support not replace discussion with your doctor or health care professionals.

Print Code: 03/2018

Authorising Department: Revenue Services

### Peninsula Health

PO Box 52

Frankston Victoria 3199

Telephone (03) 9784 7777

[www.peninsulahealth.org.au](http://www.peninsulahealth.org.au)



Reviewed by  
Consumers



Peninsula  
Health